

TERRA SUMMER

OUTDOOR LIVING PRODUCTS



TERRA SUMMER: A DECADE OF DESIGNING TIMELESS SPACES

TERRA SUMMER is a specialized North American manufacturer of high-quality, custom-made solutions for sun protection and outdoor living products for residential and commercial spaces.

Discover our products and solutions



BIOCLIMATIC PERGOLAS



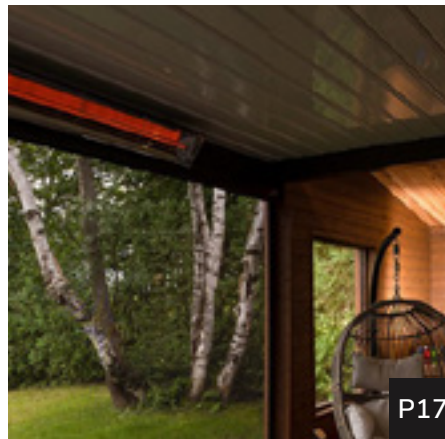
SCREENS AND SUNSHADES



PRIVACY SHUTTERS AND
DESIGN LOUVERED WALLS



ALUMINUM FENCE



HEATERS



COMMERCIAL SOLUTIONS

Collaborations
with architects
and designers

P22



Our colors and finishes are custom powder-coated in house to ensure exceptional finish and superior durability.

P23





Large Motorized Loupered Pergola



Motorized Loupered Pergola



Manual Loupered Pergola

Pergolas redefine outdoor living.

More than a structure, a pergola creates a seamless extension of the home—offering shade, light, and comfort in perfect balance. Designed to adapt to the elements, it transforms patios and terraces into refined spaces for gathering, relaxing, and living beautifully outdoors.

- 100% aluminum structure for durability and easy maintenance
- The blades open up to 115°
- Custom manufacturing
- Maximum size of one unit: 14'9" x 19'8¾"*
- Modular concept allows multiple configurations
- Fully watertight roof/canopy
- Control ventilation and air flow
- Fits perfectly with TERRA SUMMER privacy walls, motorized screens, and sunshades
- Sleek and modern design

Add-ons

- LED light strips
- Fan
- Infrared electric heaters
- Smart home and mobile control
- Weatherproof speakers

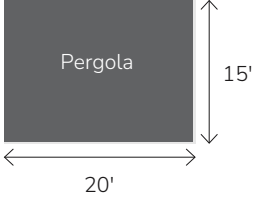
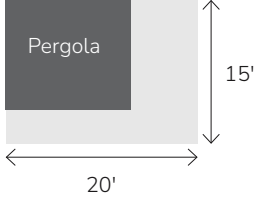
Side protection options

- Motorized screens and sunshades
- Fixed screens and sunshades
- Privacy walls
- Louvered door



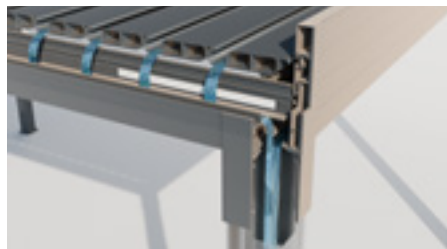
* There is a possibility of increasing the projection up to 22'9" per structure with the addition of an extra post.

Comparison Chart

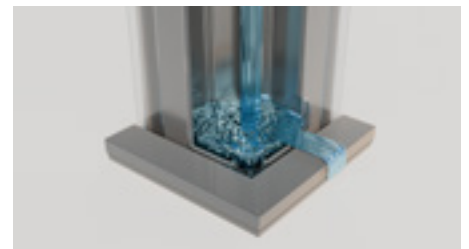
	Large Motorized Louvered Pergola	Manual Louvered Pergola
Installation type	Freestanding or wall mount	Freestanding
Maximum dimensions*	14'9" x 19'8" ³ / ₄ 4.5 x 6 meters 	11'5" x 13' ⁵ / ₈ " 3.5 x 4 meters 
Standard post height	10' / 3 m	8' / 2.4 m
Maximum square feet	290 sq. ft. / 26.9 sq. m	150 sq.ft / 13.9 sq.m
Operating mechanism	Electric-powered with remote control (1 x 110V)	Hand-operated mechanism
Rotation	115°	90°
Post dimensions	5 1/2" x 5 1/2"	4 1/8" x 4 1/8"
Modular design	✓	✓
Integrated gutter system	✓	✓
Snow load	Up to 30 pds / sq. ft.	Up to 20 pds / sq. ft.
Wind resistance	Up to 190 mph / 305 km/h	Up to 115 mph / 185 km/h
Clearance required under soffit	13 1/2"	10 1/2"



Additional clearance required above the post height



Integrated gutter system

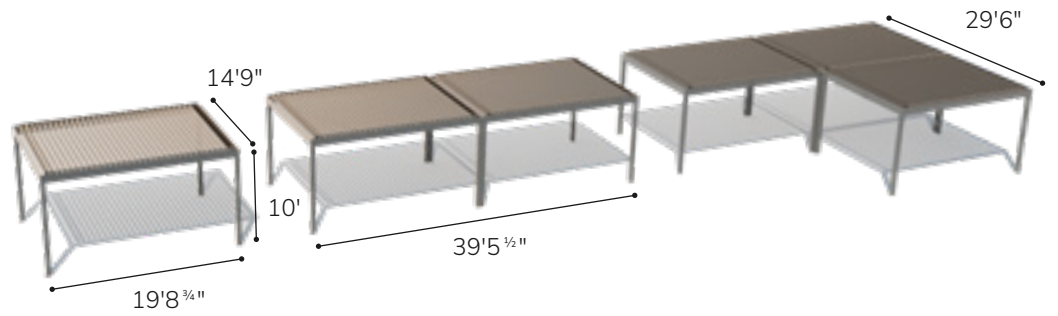


* There is a possibility of increasing the projection up to 22'9" per structure with the addition of an extra post.

Installation Types

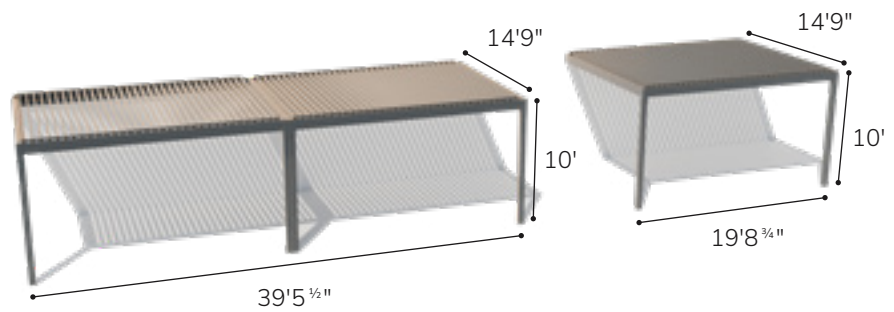
Freestanding and multi-unit configurations

Maximum dimensions*



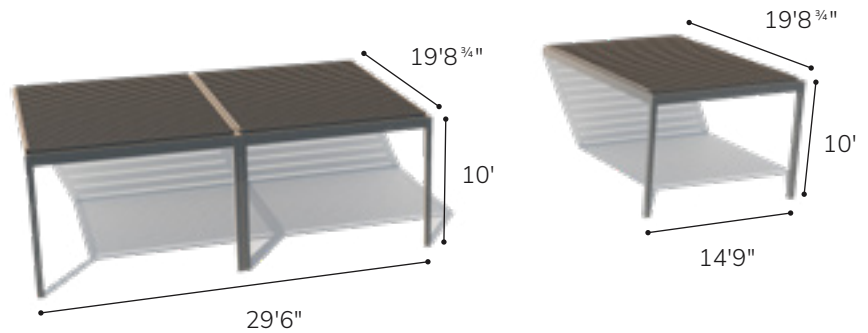
Wall mount with perpendicular louver configurations

Maximum dimensions*



Wall mount with parallel louver configurations

Maximum dimensions*



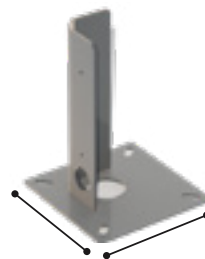
Foot plates



5 1/2" x 5 1/2"



6 7/8" x 6 7/8"



9" x 9"



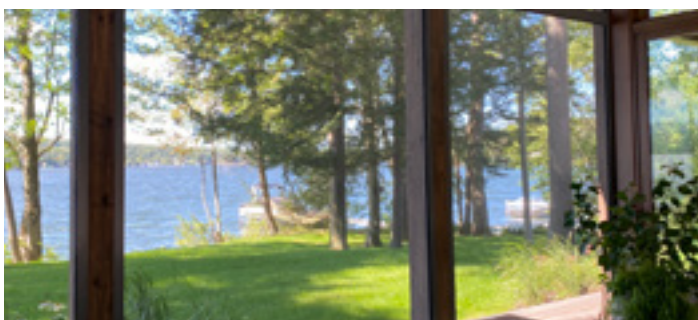
* There is a possibility of increasing the projection up to 22'9" per unit with the addition of an extra post.



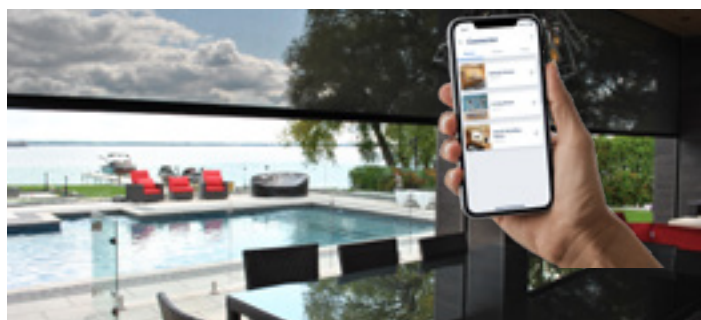
XL Motorized Screens



Motorized Screens



Fixed Screens

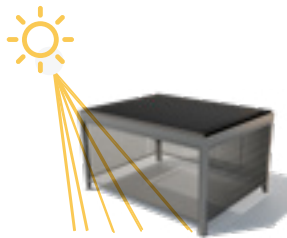


Smart Home and Mobile Control



Screens and sunshades bring precision and control to outdoor living.

By managing sunlight, glare, wind, and privacy, they enhance comfort while maintaining clean lines and visual openness—elevating patios, pergolas, and façades with subtle sophistication.

- Our screens and sunshades protect from the sunlight, wind, and insects, while enhancing privacy and outdoor comfort
- Various types and colors of mesh, solar, and vinyl fabrics are available
- Custom manufacturing
- Motorized system with remote control and smart home integration
- System covers up to 20' wide by 13' high (6 meters by 4 meters)
- 100% aluminum structure for durability and easy maintenance
- Various configurations and layouts for complete harmonization with your new or existing structure
- Fit perfectly with TERRA SUMMER pergolas
- Sleek and modern design



Comparison Chart

	XL Motorized	Motorized	Fixed
Type of installation	Wall mounted, jamb mounted or recessed	Wall mounted, jamb mounted or recessed	Jamb mounted
Maximum dimensions	20' x 13' 6 x 4 m	16' x 9' 4.8 x 2.75 m	16' X 10' 4.8 x 3 m
Operating mechanism	Tubular motor 110V	Tubular motor 110V	N/A
Fabric options and colors	2 insect screens 4 sunshades	2 insect screens 4 sunshades	2 insect screens 4 sunshades
Side track dimensions	Wall mounted: 1 1/2" x 1 7/8" Jamb mounted: 1 3/8" x 2 1/8"	Wall mounted: 1 1/2" x 1 7/8" Jamb mounted: 1 3/8" x 2 1/8"	Jamb mounted: 1 3/8" x 2 1/8"
Protection	Sun, insects, weather, or prying eyes	Sun, insects, weather, or prying eyes	Sun, insects, weather, or prying eyes
Housing (cassette)			N/A

Industry-leading technical fabrics



Textilene SuperScreen™ by Twitchell

- Renowned for its exceptional durability and strength
- Polymer formula that is UV stable, flame resistant, easy to clean, and engineered with antimicrobial agents
- Excellent visibility with 50% or 60% openings
- Offers protection against bugs and insects while allowing natural ventilation
- Light protection against wind, preserving a comfortable outdoor sensation
- Available in black for maximum transparency



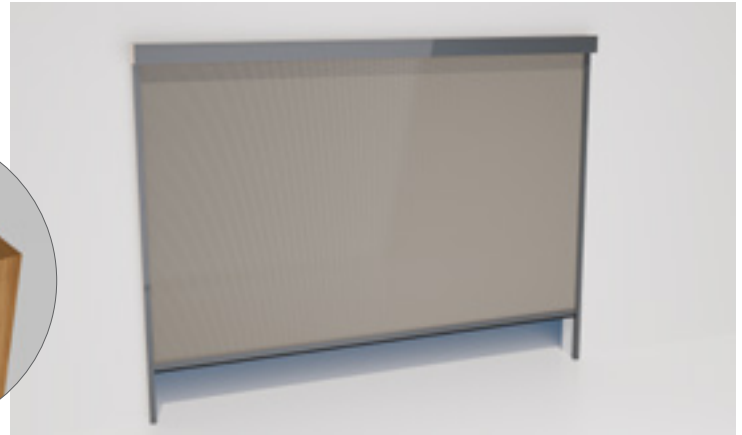
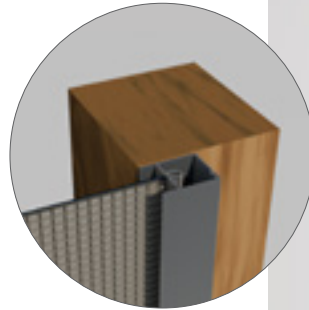
Soltis 86 by Serge Ferrari

- High-performance fabric specifically designed for solar protection
- Made from high-strength polyester fibers coated with PVC, offering superior stability
- Excellent protection from the sun, wind, and rain
- Remarkable transparency that improves the amount of natural light
- Blocks up to 93% of external heat in outdoor use
- Increases heat retention inside your outdoor living space
- Available in 4 colors

Installation Types

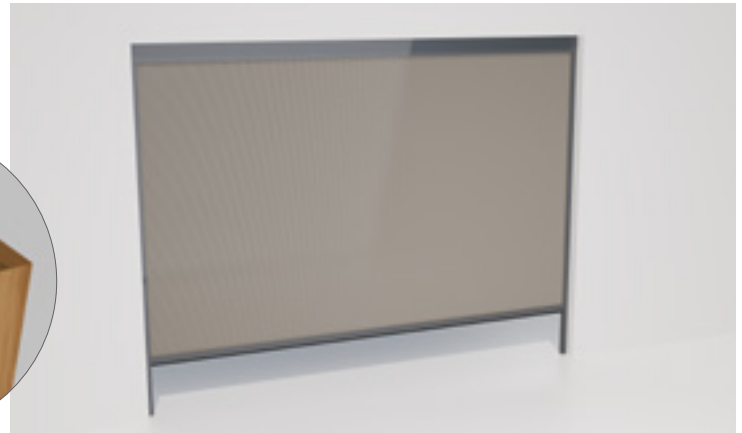
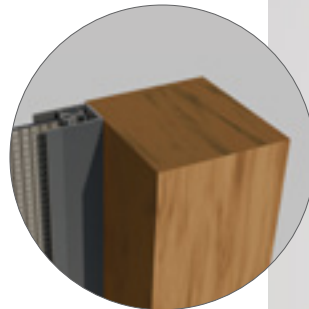
Wall Mounted

The aluminum housing and side tracks are mounted directly to the exterior face of the beam, columns, or wall, framing the opening from the outside.



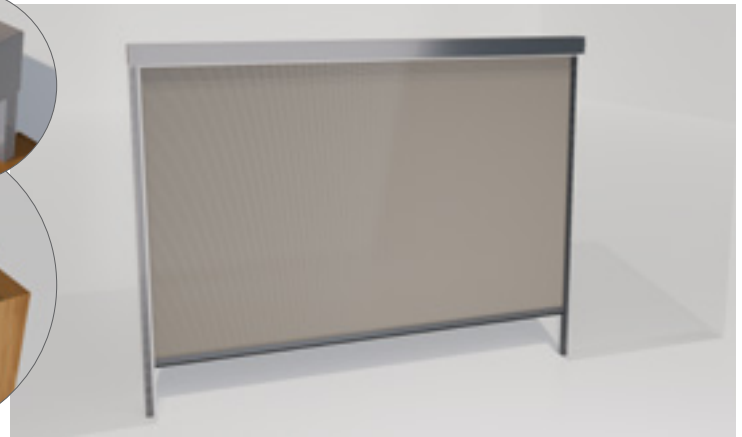
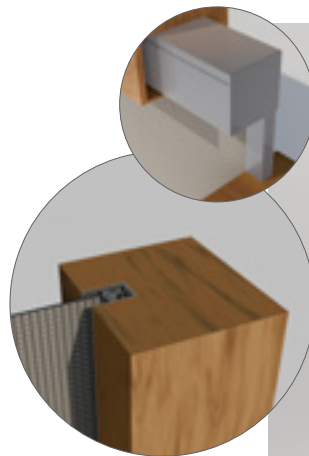
Jamb Mounted

The aluminum housing is mounted beneath the beam, while the side tracks are installed directly onto the inside faces of the columns. Both the housing and tracks remain visible within the opening.



Recessed

The aluminum housing and tracks are fully integrated within the header and side jambs of the structural opening, keeping the screen recessed and discreet—without reducing the usable size of the opening.



PRIVACY SHUTTERS AND DESIGN LOUVERED WALLS



Fixed Design Louvered Walls



Adjustable Privacy Shutters



Adjustable Louvered Door

Privacy shutters and design louvered walls define space with intention.

They frame outdoor environments with architectural rhythm, offering privacy, protection, and visual depth while allowing light and airflow to pass through. The result is a refined sense of enclosure—where openness and intimacy coexist in perfect balance.

Construction in aluminum extrusion

- 100% aluminum structure
- Corrosion resistant and low-maintenance solution
- Perfectly suited for architectural and outdoor structural applications

Provides protection and control

- Protects against the sun, weather, and prying eyes
- Adjusts brightness
- Controls ventilation

Enhanced outdoor living

- Transform any space into a comfortable, year-round outdoor living area
- Seamless integration with TERRA SUMMER bioclimatic motorized pergola or your existing structure

High-quality materials

- Our aluminum alloy is specifically engineered for both strength and a premium surface finish
- Offers a high durability and greater longevity than wood or plastic equivalents
- Recyclable and eco-friendly products
- Endcaps are made with UV resistant polymer



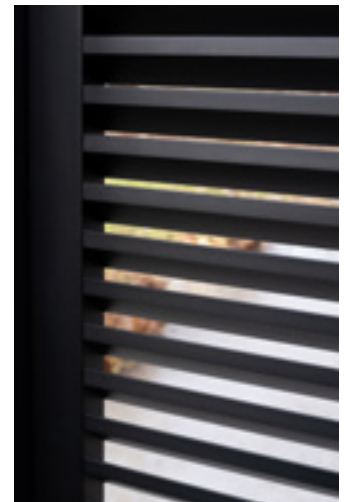
Lumina Privacy Shutters (adjustable)



Elliptical Privacy Shutters (adjustable)



Linear Design Louvered Walls (fixed)



Angled Design Louvered Walls (fixed)

Comparison Chart

	Privacy Shutters		Design Louvered Walls	
	Lumina	Elliptical	Linear	Angled
Blade types	Lumina	Elliptical	Linear	Angled
Privacy	Full privacy on demand		Partial privacy; design features to create ambiance and architectural accents	
Blade orientation	Horizontal or vertical		Horizontal	
Maximum dimensions for horizontal installation	5' width x 10' height (50 sq. ft.) – 1 panel / 10' width x 10' height (100 sq. ft.) – 2 panels 15' width x 10' height (150 sq. ft.) – 3 panels / 20' width x 10' height (200 sq. ft.) – 4 panels			
Maximum dimensions for vertical installation	5' width x 9' height (50 sq. ft.) – 1 panel 10' width x 9' height (100 sq. ft.) – 2 panels 15' width x 9' height (150 sq. ft.) – 3 panels 20' width x 9' height (200 sq. ft.) – 4 panels		N/A	
Louver adjustment mechanism	Each panel is equipped with a unique, manual louver adjustment lever		Fixed blades	
	Five lockable settings from 0 to 115 blade angles	Adjustable louvered blades Louvers can be positioned at the desired angle		
Frame colors	Available in all TERRA SUMMER powder-coated color options			
Blade colors	Available in all TERRA SUMMER powder-coated color options			
Rail sliding system	N/A		Optional	
Lock system	✓	N/A	N/A	

Manually Adjustable Shutters



Easy to use with settings between 0° and 115° to adjust the blades. Adjust panel section independently to control privacy, light, and air flow.

Aluminum Wood-Look Finishes



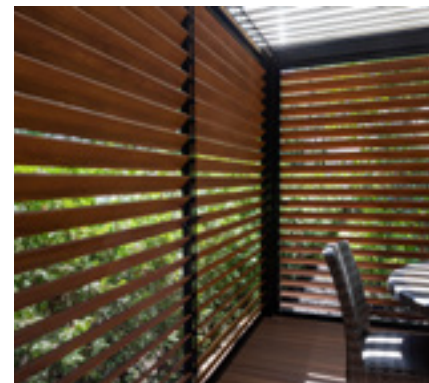
Pecan* - TS107

Hazelnut* - TS113

Wood-look finishes add warmth and charm to your outdoor space, without the extra maintenance of wood.

* Offered exclusively for the shutters/louvers

Durable Aluminum Structure



Durable, corrosion-resistant, long-lasting, and environmentally friendly.



Aluminum fencing defines boundaries with understated elegance.

More than a perimeter, it brings structure, security, and visual continuity to outdoor spaces—framing landscapes with clean lines and enduring design. Engineered for durability and refined aesthetics, it enhances the outdoor environment while preserving openness, flow, and architectural harmony.

Premium quality fence built to last

- 100% aluminum construction for superior strength
- Highly durable, resistant to rust, corrosion, and UV damage
- Weather and fire resistant, built to withstand extreme conditions, from heavy snow to intense heat
- Increases safety, security and privacy

Architectural harmony and esthetic elegance

- Flawless look, perfectly matched to luxury outdoor spaces
- Refined design for architectural and landscaping harmony
- Customizable colors and configurations

A thoughtful investment for your outdoor spaces

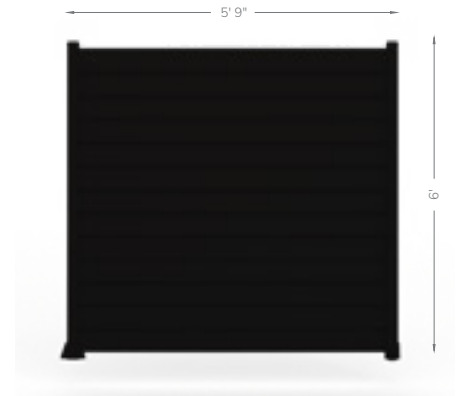
- Enhances property appeal and value
- Made from eco-conscious, 100% recyclable aluminum
- Low maintenance finish with no painting or staining required

Classic configuration

Maximum width:
5' 9" center to center of posts

Minimum height:
3 blades (1' 5")

Maximum height:
13 blades (6')

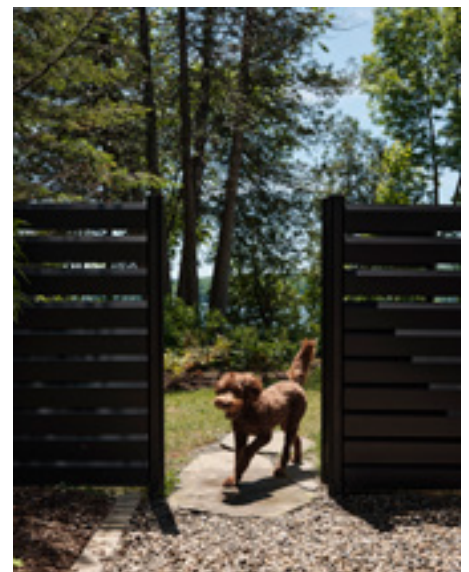


Modern configuration

Maximum width:
5' 9" center to center of posts

Minimum height:
7 blades (3' 6")

Maximum height:
13 blades (6' 2")

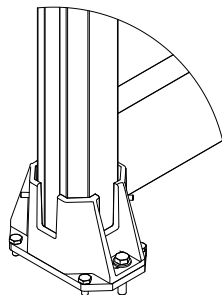




Fixing systems

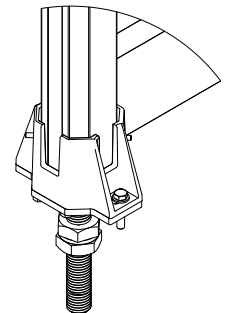
Standard mounting plate

- Ground screws with adjustable head
- Enables quick, visible adjustment of post alignment for perfect straightness

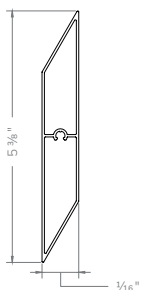


Mounting plate for ground screw (2-3/8")

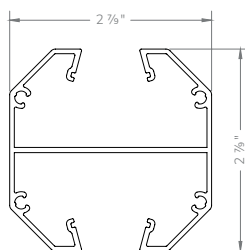
- Ground screws with adjustable head
- Allows precise post alignment, discreetly adjusted for a refined, seamless finish



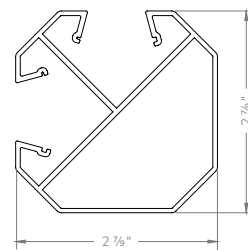
Profiles



Horizontal blade / Visual barrier



Straight fence post



Corner fence post

HEATERS



**Bromic Eclipse
Smart-Heat™ Pendant**



Infratech Heaters



**Bromic Eclipse
Smart-Heat™ Portable**

Infrared heaters extend outdoor living beyond the seasons.

By delivering targeted, radiant warmth, they create a cocoon of comfort without disrupting the atmosphere or design of the space. Discreetly integrated, they allow patios and pergolas to remain inviting long after the temperature drops—transforming outdoor moments into year-round experiences.



INFRATECH COMFORT

Outdoor living spaces come in all sizes, styles and layouts. With Infratech, you can choose the heater profiles, sizes and capacities to add premium comfort to any space. Our heaters can bring optimal comfort to a single room or expansive property, in spaces where ceilings are high or low, or in areas where heaters are sheltered from the elements or exposed on a trellis or pole.

Infratech SL Series

The SL model is designed with a low profile that can be mounted up to 11'. The housing body and mounting brackets come with a stainless hue anodized aluminum finish or black finish.

Infratech W and WD Series

The W and WD models feature durable stainless steel construction, minimal clearance requirements, recessed mounting options and short standoffs. WD dual element produce more intense heat and can be mounted up to 14'.



Infratech SL Series Slimline Single Element Heaters



Infratech W Series Single Element Heaters



Infratech WD Series Dual Element Heaters

BROMIC HEATING

Bromic Eclipse Smart-Heat™ Electric

The Bromic Eclipse Smart-Heat™ Electric (2900W /240V) is a refined heating and lighting solution designed to elevate the comfort and atmosphere of premium outdoor spaces. Featuring a sleek matte-black ceramic face, dimmable LED lighting, and three precise heat settings, Eclipse brings warmth, ambience, and modern elegance together in one sculptural form.

Eclipse Smart-Heat™ Portable

Premium portable infrared heater with integrated LED lighting

The Eclipse Smart-Heat™ Portable (2900W /240V) is a sculptural, high-performance heating solution designed for homeowners who want to elevate comfort without compromising on style. Delivering powerful radiant warmth and soft, dimmable LED illumination, Eclipse transforms any outdoor area into a refined, all-season retreat. Its minimalist silhouette, matte-black finish, and premium engineering make it a standout accessory for terraces, dining areas, poolside lounges, or any design-forward space.



Bromic Eclipse Smart-Heat™ Electric



Eclipse Smart-Heat™ Portable



Turn patios into profit centers

Restaurants, cafés, and bars rely on atmosphere. Our outdoor living products create extended season dining environments that attract guests and increase revenue.improve overall ROI.

- Expand seating capacity
- Operate during rain, wind, or strong sun
- Integrate lighting, heating, and fans for all-day comfort
- Deliver a premium outdoor dining experience
- Improve customer loyalty and dwell time



Create signature outdoor experiences

Hotels, resorts, and country clubs use TERRA SUMMER structures to elevate guest amenities and unlock new revenue opportunities.

- Sunset lounges, privacy hideaway and event spaces
- High-end look that enhances brand prestige
- Protection for brunches, weddings, and VIP areas
- Weatherproof comfort for year-round use
- Increased guest satisfaction and member retention



Multi-Family Properties: Outdoor amenities that attract and retain residents

Modern residents value community and lifestyle. Our solutions transform rooftops, courtyards, and shared areas into desirable gathering spaces.

- Stylish, functional outdoor living zones
- Shaded areas for grilling, lounging, and entertaining
- Extended season protection without costly maintenance
- Increases perceived property value and leasing appeal
- Encourages community interaction and resident loyalty



Discover the Marriott Hotel project: An elevated experience at new heights

This collaboration with Marriott demonstrates the full versatility of TERRA SUMMER’s commercial solutions. Spanning 630 square feet, the project integrates three XL pergolas with custom extensions to create a reimagined rooftop destination designed to welcome large gatherings. Thoughtfully equipped with motorized screens, privacy shutters, integrated infrared heaters, ambient LED lighting, and premium aluminum finishes, the space delivers comfort, control, and architectural coherence throughout the day and into the evening.

This successful realization reflects close collaboration between the hotel group, engineers, real estate developers, and key stakeholders—resulting in a sophisticated, high-performance outdoor environment tailored to commercial hospitality standards.

[» Learn more on our website](#)



Technical Details

- 3 Large Motorized Louvered Pergola
- Installation Type:
wall mounted pergolas, attached side by side
- Frame Width: Total of 14'9"
- Frame Height: 12'
- Projection / Length: Total of 61 feet (99 blades)
- Frame Color: Textured Black 9005
- Blade Color: Textured Black 9005

Add-ons Features

- 5 XL Motorized Screens with
Sun Protection Ferrari Soltis 86 Fabric
- Privacy Shutters
 - Opening Height : 12'
 - Opening Width : 14'9"
 - Frame & Blade Color: Textured Black 9005
- Lighting: 150 feet of LED lights
- Crossbeam and Fan: Black
- Heaters: 4x Infratech Dimmable SL4024 Black





Why architects and designers specify TERRA SUMMER

TERRA SUMMER is more than a product manufacturer—we're a collaborative partner to the A&D community, supporting projects from concept to completion.



Your vision, perfectly realized outdoors.

Design freedom and customization

Modular systems, custom sizes, multiple configurations, and finish options to match any architectural vision.

Full technical support

3D renderings, and detailed drawings for seamless integration.

Site-specific engineering

Wind/snow load calculations, structural support, and permitting documentation.

Smart integration

Lighting, motorization, screens, heaters, and automation for elevated functionality.

Consistent quality

CNC-produced, fully aluminum, powder-coated in-house for precision and durability.

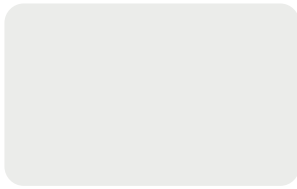
Dedicated project collaboration

Expert team working closely with architects, designers, and contractors to ensure flawless execution.



All our products are powder-coated in house to ensure exceptional finish and superior durability.

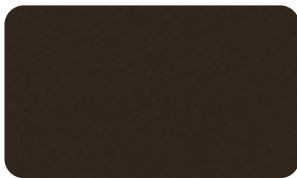
Classic Colors



Signal White
RAL9003



Textured Black
RAL9005ST



Textured Dark Bronze
TS108ST

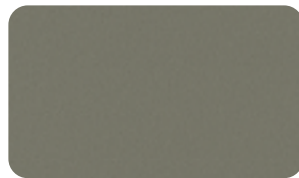
Designer Colors



Textured Gray Beige
RAL1019ST



Textured Anthracite Gray
RAL7016ST



Textured Stone Gray
RAL7030ST



Textured Beige Gray
RAL7006ST



Textured Graphite Gray
RAL7024ST



Textured Quartz Gray
RAL7039ST



Textured Pebble Gray
RAL7032ST



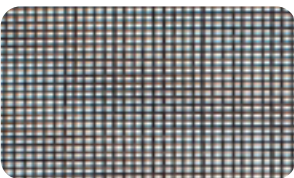
Textured Dusty Gray
RAL7037ST



Textured White Aluminum
RAL9006ST

Order your color and screen
sample kit

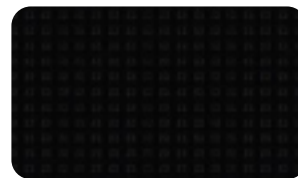
Fabrics Screens and Sunshades



Twitchell Textilene
Nano 50 Black
Bug Resistant



Twitchell Textilene
Nano 60 Black
Bug Resistant



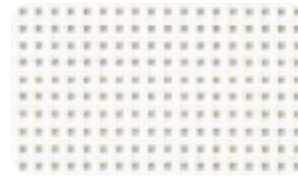
Ferrari Soltis 86
51176 Deep Black
Sun Protection



Ferrari Soltis 86
2047 Anthracite
Sun Protection



Ferrari Soltis 86
2043 Bronze
Sun Protection



Ferrari Soltis 86
50690 Snow White
Sun Protection

Aluminum Wood- Look Finishes*



Hazelnut
TS113



Pecan
TS107

*Wood-look finishes are offered exclusively for our Privacy Shutters and Design Louvered Walls (shutters / louvers only).

WE CAN'T PROMISE YOU GOOD WEATHER,
BUT WE CAN GUARANTEE YOU A TERRA SUMMER.



Modern and durable outdoor living products

Designed with innovation and durability in mind, our custom-designed products integrate seamlessly into your outdoor spaces.



Peace of mind with a 10-year warranty

Engineered with precision and tested to the highest standards, every TERRA SUMMER product is designed to stand the test of time — a lasting investment in superior craftsmanship and enduring quality backed by a 10-year warranty.



Fully customized and designed around your vision

From color and size to accessories and functionality, every TERRA SUMMER product is fully customizable — thoughtfully designed to reflect your vision and bring your outdoor dream to life.



Engineered and made in North America

Proudly designed and manufactured in North America, every TERRA SUMMER product is crafted from premium materials to deliver enduring strength, effortless maintenance, and timeless elegance.



VISIT [TERRASUMMER.COM](https://www.terrasummer.com)

**to discover a wide range of customization options.
Select your ideal product size, color, accessories, and more
to create an outdoor living space tailored to your needs.**

Begin your dream outdoor project today.

