



IFD GROUP

# Bigger & Impressive

*Discover the new world of furniture in our showroom, now DOUBLE IN SIZE!*



*New Chapter  
in IFD*

*Tradition &  
Technology*

*Trees For  
A Lifetime*

*My experience  
as a Designer*



IFD GROUP

# BALAM

COLLECTION



Editor, Creative & Layout

*Enrique López*

Design Manager

*Jessica Quintero*

Marketing Manager

*Daniel Moran*

Special thanks to!

*Nelson Leon,  
Maricarmen Estrada,  
Angelica Zuñiga,  
Denisse Barajas,  
Francisco Cardenas  
Miguel Ochoa.*

**04**

*A New Chapter In Ifd History!*

**07**

*The Japanese Art Of Sashimono  
Fusion Of Tradition & Technology*

**12**

*How To Make Do Trees Endure For A  
Lifetime?*

**17**

*My Experience as a Designer for IFD*

**20**

*Partnership Solutions as client*



# *Welcome to a new chapter in IFD history!*

In the middle of an uncertain landscape, where the trend is to downsize and protect what has been built, at IFD, we have decided to go in the opposite direction: to grow and expand boldly! With over 25 years dedicated to innovation and creating best sellers, we have decided not only to stay the same but to double in size.

We are thrilled to announce that we are moving to a spectacular showroom in the prestigious building at Hamilton High Point, where we will debut a brand-new showroom in a two-story space. This new venue will not only double our size but will also allow us to offer you a closer and more complete experience.







Here, you can explore all the Partnership Solution services specially designed for your company and discover the new collections we have been enthusiastically working on.

While others may choose to slow down, at IFD, we are committed to growth and change. This commitment is deeply rooted in our culture of expansion. We are excited about this new phase and hope you will join us on this journey, discovering why, even in uncertain times, growing twice as much is our way forward.

We warmly invite you to visit our new space and see for yourself how, instead of shrinking, we're growing bigger than ever.



*See you soon at IFD's new showroom in High Point;*

Center Point on Hamilton 401  
S Hamilton St., High Point, NC  
27260, Space 145 & 245



*Furniture for a*  
**Lifetime!**



**BALAM**  
COLLECTION

*Crafted from pine and teak, designed for style and durability.*



# *Preserving Tradition, Innovating Craft:*

## *The Japanese Art of*

# *SASHIMONO*

In a world where mass production often overshadows artisanal craftsmanship, there exists a timeless tradition that continues to inspire awe and admiration: the Japanese art of sashimono. Rooted in centuries of tradition, sashimono exemplifies the meticulous attention to detail and reverence for natural materials that define Japanese craftsmanship. Today, as the global furniture industry grapples with sustainability and quality, sashimono offers a beacon of hope and inspiration.

At its core, sashimono is more than just furniture-making; it is a philosophy that celebrates harmony between form and function, simplicity and elegance. Originating in the Edo period, sashimono artisans mastered the art of joinery, seamlessly fitting together wooden components without the need for nails or screws. The result is furniture that exudes a sense of timelessness and durability, transcending fleeting trends and fads.

In recent years, the principles of sashimono have found renewed relevance in the face of environmental concerns and a growing appreciation for artisanal craftsmanship. As consumers increasingly prioritize sustainability and longevity in their purchasing decisions, the demand for furniture made with traditional techniques has surged. This resurgence has sparked a renaissance within the furniture industry, with designers and manufacturers alike turning to sashimono for inspiration.

One of the most remarkable aspects of sashimono is its adaptability to modern design sensibilities. While rooted in tradition, sashimono furniture seamlessly integrates with contemporary interiors, adding a touch

of tradition and elegance to any space. From minimalist Scandinavian-inspired designs to sleek, urban lofts, sashimono furniture effortlessly complements a wide range of aesthetics, proving its versatility and enduring appeal.

By embracing sashimono techniques, furniture makers can not only create beautiful pieces but also foster a deeper connection between consumers and the objects they bring into their homes.

*“Sashimono exemplifies the meticulous attention to detail...”*





*Fusion of*

# *Tradition & Technology*



Joints in construction and carpentry are fundamental, as they allow structural elements to work together efficiently. By using traditional assembly techniques along with additional elements like glue or nails, more integrated, resistant, and harmonious joints with the wood are achieved, contributing to a more natural and attractive aesthetic result.

The proper arrangement of these joints not only allows for better distribution of applied forces (such as compression, tension, or bending) but also increases resistance to external factors like wind or moisture. Thus, by choosing well-designed and executed joints, the structural performance of the work can be optimized, and its useful life prolonged, which is a key aspect in modern and responsible construction.

Using appropriate joint techniques not only improves the aesthetics of a piece of furniture but is also a smart strategy to ensure the safety and durability of constructions.



# Types of Joints:

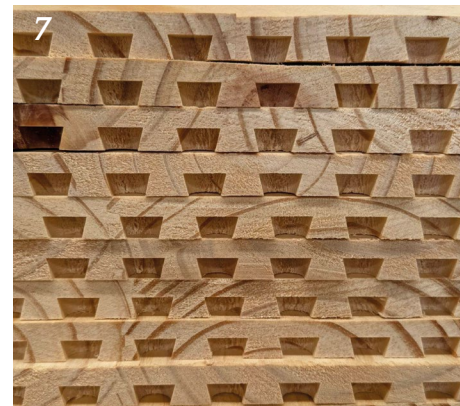
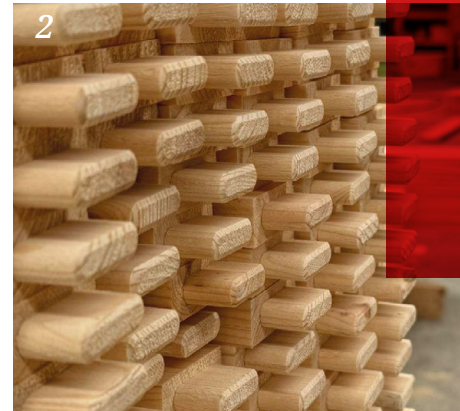
1. *Finger Joint*
2. *Mortise and Tenon*
3. *Lap Joint*
4. *Tongue and Groove Joint*
5. *Dowel Joint*
6. *Groove/Channel*
7. *Dovetail Joint*

When choosing a wooden joint for furniture, it is essential to consider the quality and durability of the type of joint used. Opting for traditional joints such as dovetail, mortise and tenon joints ensures greater long-term strength and stability as they distribute loads and stresses more effectively.

It is also important to assess how the wooden pieces are joined, prioritizing options that are not only aesthetically pleasing but also use high-quality adhesives that contribute to the furniture's robustness. Additionally, ensuring that the joints are well-finished and tightly fitted will not only enhance the overall appearance but also prolong the furniture's lifespan. Lastly, the type of wood used in the joint is considered, as each species has its unique properties that impact the furniture's strength and behavior over time.

Currently, there is a trend towards making assembly details visible in furniture design. This practice allows joints, when well-executed, to offer a renewed and attractive perspective on the furniture. Additionally, the growing interest in craftsmanship and handmade production has led to increased customer interest in visible joints, as they value the authenticity and effort behind each piece.

Traditional joinery techniques, such as Japanese methods, have endured over time due to their focus on quality and precision. However, the incorporation of modern technology, such as CNC machines and power tools, has revolutionized furniture production.







*“Traditional joints are sustainable as they minimize the use of external resources and have proven to be robust and durable over time.”*

Currently, there is a trend towards making assembly details visible in furniture design. This practice allows joints, when well-executed, to offer a renewed and attractive perspective on the furniture. Additionally, the growing interest in craftsmanship and handmade production has led to increased customer interest in visible joints, as they value the authenticity and effort behind each piece.

Traditional joinery techniques, such as Japanese methods, have endured over time due to their focus on quality and precision. However, the incorporation of modern technology, such as CNC machines and power tools, has revolutionized furniture production.

These tools enable cuts and joints to be made with a level of precision that would be difficult to achieve manually, which not only improves the quality of the final product but also optimizes production times where efficiency and speed are essential to meet delivery deadlines, making these technologies indispensable.

Moreover, technology allows for greater reproducibility in mass production, meaning that homogeneous furniture can be produced while meeting consistent quality standards.

The fusion of traditional techniques with technological innovations not only improves the efficiency of the production process but also elevates the quality of the final product, ensuring that the essence of design and functionality is maintained.







**BLACKBURN**

*Enhance your living space with refined comfort and classic design.*

*The Blackburn collection offers the perfect foundation for creating a welcoming and relaxing environment for all your gatherings.*







# *How to make do trees endure for a lifetime?*

In a market where sustainability and environmental responsibility are now crucial, IFD stands out with its unique approach. We are not just a furniture manufacturer but a leader in designing and crafting furniture that meets the highest quality standards and demonstrates a deep respect for the environment.

IFD has maintained an unwavering commitment to using solid wood in all its products since its inception. This approach is not merely an aesthetic or functional choice but a manifestation of our environmental responsibility. By utilizing solid wood, we reaffirm our dedication to sustainable practices and a production process that minimizes ecological impact.

One of our strengths lies in using mango in several of our collections. These lines have been acclaimed for their exceptional design and award-winning quality, and they share a fundamental characteristic: the use of mango wood. But what makes this choice of wood especially sustainable?



Scan the QR code and  
enjoy the complementary  
video that expands on the  
details of this article!



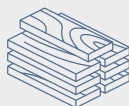
Unloading  
of wood and  
classification



Wood  
storage



Wood  
cutting (board)



Surplus is  
prepared for  
reuse



Stove process  
for moisture  
removal



Production







Extensive mango plantations are found in the tropical highlands of Mexico's coastal states, and 98% of these farms are regulated to ensure proper commercialization of the fruit. However, the natural lifecycle of these trees presents a challenge: when they cease to be productive, they face either being cut down or, in the worst cases, burned to make way for new crops. This process wastes valuable wood, damages the soil, and contributes to deforestation.

At IFD, we see the challenge of tree disposal as an opportunity to make a significant environmental impact. Instead of letting these trees be discarded, we have implemented a recovery process that gives them a second life. When trees stop being productive, they are cut down and sent to our sawmill, where we transform the wood into high-quality furniture.

*“We recover  
over 3,500  
trees annually.”*



We employ advanced cutting, storage, and recovery techniques to ensure maximum utilization of each piece of wood. Wood remnants from each cut are repurposed in the production of other furniture using finger jointing, pressing, and planing methods. This meticulous approach ensures that 99% of the wood is reused. The rest of the wood that can't be reused is used for our dryers as fuel to start the drying process, and in this way, 100% of the mango wood is fully reused, reducing waste and maximizing the value of each tree.

Each piece of furniture crafted by IFD embodies robustness and durability and tells a story of sustainability and environmental respect. By choosing our products, companies invest in exceptional furnishings and contribute to a more significant cause: extending the life of one of our planet's most important natural resources.



At IFD, each furniture piece embodies sustainability, honoring the life of trees and committing to environmental responsibility, while building a greener future and leaving a legacy of conservation and respect for nature.

*Francisco Cárdenas*

*Industrial Engineer*

# *Barstool Collections*

*We present the launch of our exclusive barstool lines, designed to offer style and durability for any space. Each piece has its unique touch, perfectly blending with various environments.*









# Tiffany

## COLLECTION



*Imbued with timeless elegance, this piece adds a classic touch to your décor.*



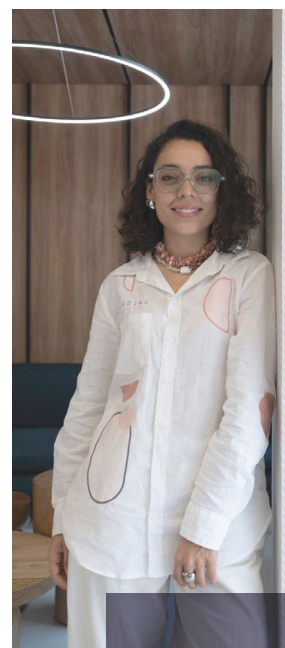




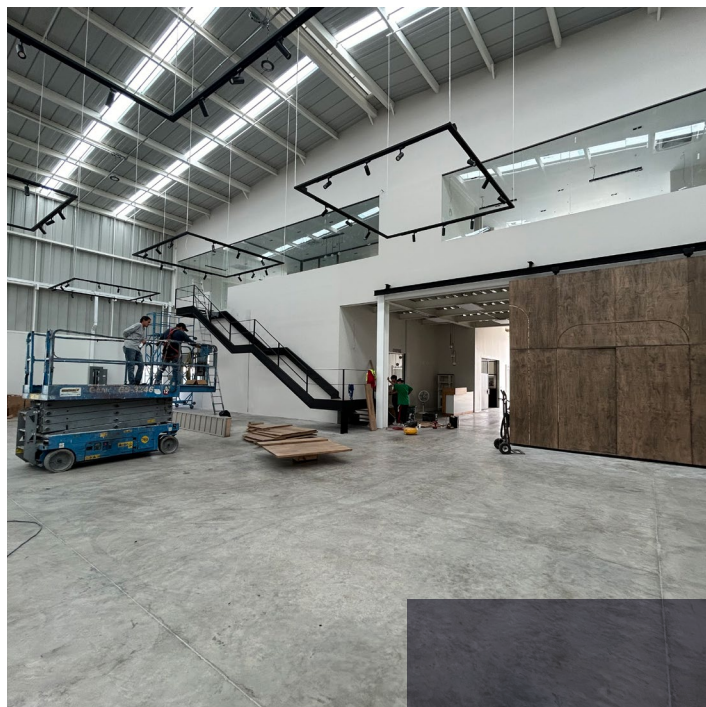
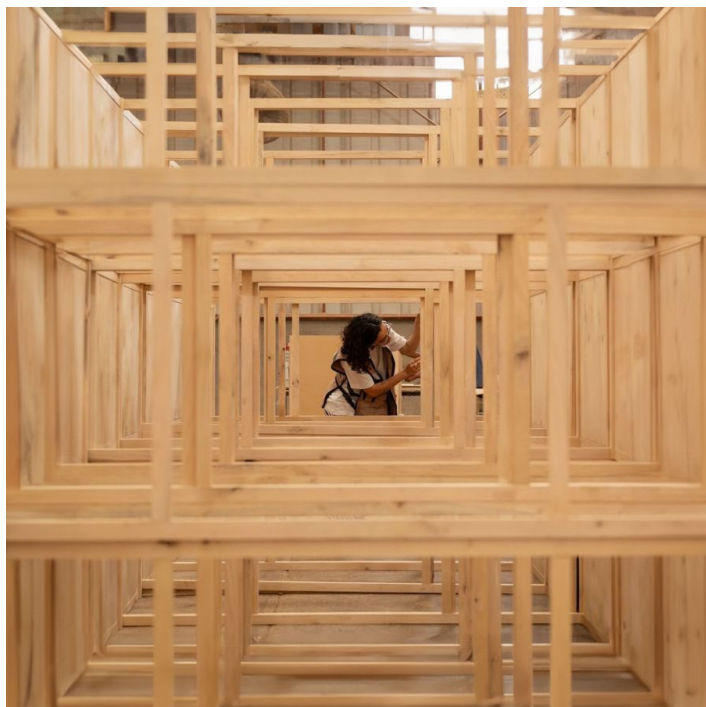
# *My Experience as a Designer for IFD*

**Valeria Anahi**  
*Valeana Interiorismo*

Since day one, I felt inspired by the craftsmanship of each piece, as every piece is unique and reflects a deep dedication to detail. They are always striving to innovate in their collections, creating more contemporary designs that can adapt to any style, which I love. Their furniture is very versatile and can be used in a variety of settings, from residences to restaurants, hotels, offices, and the best part is that these are pieces that will last a lifetime due to their great durability and quality.







Collaboration with your team has been one of the most outstanding aspects because there is always synergy between the design, production, and logistics departments. This has allowed my spaces to materialize more efficiently and practically because of the many options available. Currently, curved and organic shapes are trending, and you have updated your collections with these new forms, which helps me propose them in more modern spaces.

The furniture has not only met my aesthetic expectations but also the functional standards and quality of its solid wood. Working with this style of furniture has helped me as a designer to explore new possibilities within spaces. The solid wood provides a warmth that harmonizes beautifully within the spaces I design, which mostly feature neutral colors and contrasts with ironwork, creating cozy and timeless environments. Each project we've completed together reflects how the quality of the furniture can elevate a space, with its rich tones and distinctive, organic grain.

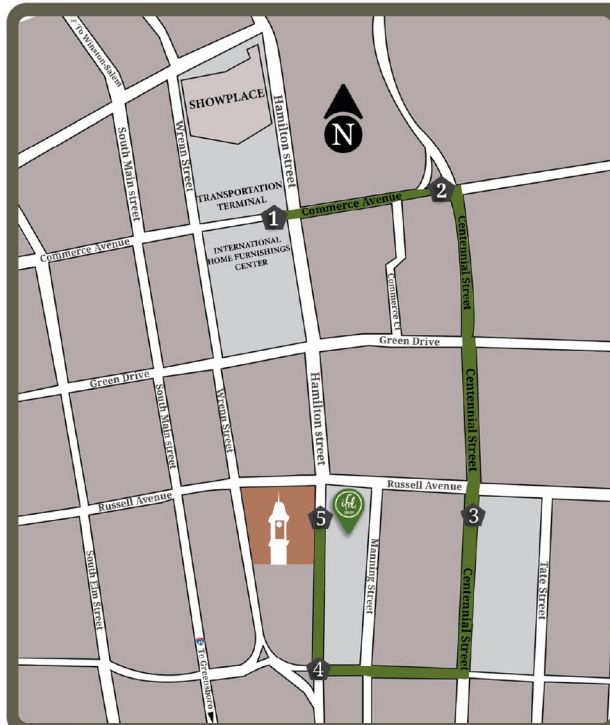


My time working with your brand has been a journey of growth and continuous learning. I am grateful for the opportunity to have collaborated with IFD and to have contributed to projects that celebrate creativity, design, and the durability of solid wood. I am excited about future collaborations and look forward to continuing to create spaces that reflect the essence of your brand.



*valeana.interiorismo*





*New IFD Showroom  
on Hamilton  
401 S. Hamilton St.*



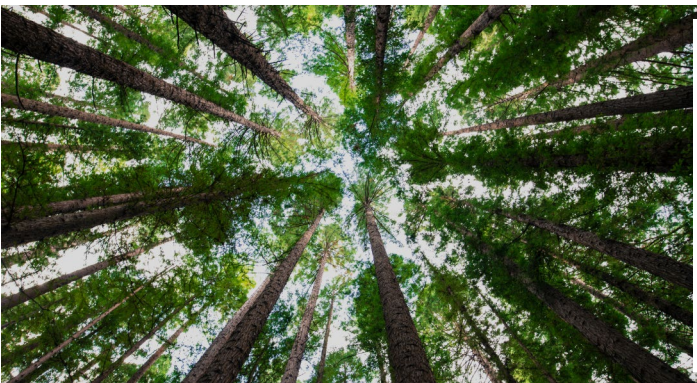
# My experience as a client with



My experience as a client of the Partnership Solutions Program, I can say that the flexibility of the **Mix & Match Program** has completely transformed my shipping strategy. Now I can customize a 53-foot container, maximizing each shipment and receiving a variety of products.



The **Custom Design Program** has impressed me. With their attention to detail and focus on innovation, the design team not only meets but exceeds my expectations on every project. The quality and creativity they offer are truly remarkable, and they pay great attention to all the details I propose, both in design and in quality improvements.



IFD is not just about making furniture; they embody a **Commitment** to excellence and **Sustainability** in every step of their manufacturing process. I am excited to continue working with them and see where this Partnership will take us. I highly recommend having a company like this as a partner, especially one with over 25 years in the market.





Speaking of efficiency, ***The Ready To Ship System*** has made my operations much more agile. Thanks to their extensive warehouse network in **Chicago, Atlanta, Houston, And Phoenix**, I can receive my products quickly, which makes a significant difference in my business for fast deliveries and sales.



IFD stands out as a true trendsetter. Innovation is their compass; they are always pushing boundaries and redefining what is possible in the furniture world. Additionally, The ***USMCA's*** focus on eliminating barriers and promoting cooperation truly enhances competitiveness and innovation in our industry.



***As a Vertically Integrated Furniture Company***, I appreciate how they oversee every stage of the manufacturing process. The optimization of processes and the use of technology are key to providing a reliable service, and that is reflected in the quality of the products I receive.



Moreover, ***The Proximity*** of their factories in Mexico has significantly reduced my shipping costs and lead times, which is a great advantage in the **U.S and Canadian Markets**.

Finally, ***The Galería Program*** has been a fantastic opportunity for my stores. Promoting the quality and beauty of the products, along with sales support materials and discounts, has strengthened our collaboration.







*Let's work together to make Galeria an one-stop destination for all their needs.*

## *What is included in the Galeria Program?*



*Galeria wooden sign*

Dim: 70 x 31,4 x 1 1/8  
Wt: 41,8 lb



*Wooden ladder fabric display\**

Dim: 63 x 17 3/8 x 3 1/8  
Wt: 18lb

\*This item is available when you add upholstery to your Galeria.



*Social Media and Sustainability POPS*



*Banner Stand*

Dim: 70 x 7 x 31,5  
Wt: 9lb



*Printed Tear-off Pads  
(100 pages)*

Use the promo code ***“GALERIA”*** to take advantage of this program.

Check the terms and conditions with your sales representative





COMMITTED TO  
ENVIRONMENTAL  
SUSTAINABILITY

# PLANTING +40,000 TREES



PAROTA TREE    MAHOGANY    HABILLO TREE  
PALO SANTO TREE    PRIMAVERA OR WHITE MAHOGANY TREE



WATER  
TREATMENT  
PLANT



RENEWABLE  
ENERGY



WATER  
BASED



RECYCLED  
MATERIALS

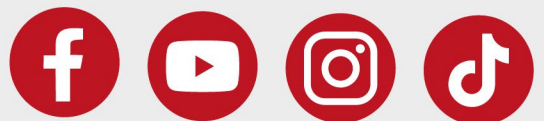


WOOD-RECOVERY  
DEPARTMENT





*Furniture for a*  
 **Lifetime!**



CONNECT WITH US!

[ifdgroup.com](http://ifdgroup.com)